



Mr I R Irwin
(IIR)
Headteacher

Line Management of:
Senior Deputy Headteacher: Mr J Warren (JWA)
Deputy Headteacher: Mr P Whitehead (PWH)
Associate Deputy Headteachers: Mr C Beever (CBV) / Mr R Clifford (RCL)
Assistant Headteacher: Ms B Schofield (BSC)
Business Manager: Ms K Oaks (KOA)
Headteacher's PA & Admin Manager: Mrs J Richards (JRI)
ICT Network Manager

Mr J Warren
(JWA)
Senior Deputy
Headteacher

Mr P Whitehead
(PWH)
Deputy Headteacher

Mr C Beever
(CBV)
Associate Deputy
Headteacher

Mr R Clifford
(RCL)
Associate Deputy
Headteacher

Ms B Schofield
(BSC)
Assistant
Headteacher

Ms K Oaks
(KOA)
Business Manager

Mrs J Richards
(JRI)
Headteacher's PA &
Admin Manager

ICT Network
Manager

Line Management of: Assoc. Deputy
Head, (Pastoral, Culture & Ethos)
Assistant Head - Literacy, SEAL and
Independent Learning
Assoc. Asst. Head (Maths &
Numeracy)
Assoc. Asst. Head (English &
Literacy)
Assoc. Asst. Head (Attendance,
Equality & Opportunity)
Director of Business Studies
Cover Manager

Line Management of:
DOS - ICT
DOS - Computing
DOS - Geography
DOS - Health & Social Care
Estates Manager
SENCO

Line Management of:
Assoc. Asst. Head - Science &
STEM
DOS - History
Progress & Engagement Leaders
x 5
G&T/.More Able Co-ordinator
SIMS/Data Manager
Examinations & Student Record
Manager

Line Management of:
Lead Practitioner of MFL
DOS - Art & Design Faculty
DOS - Food
Director of D&T, Construction
& Engineering
Early Careers Framework
Leader

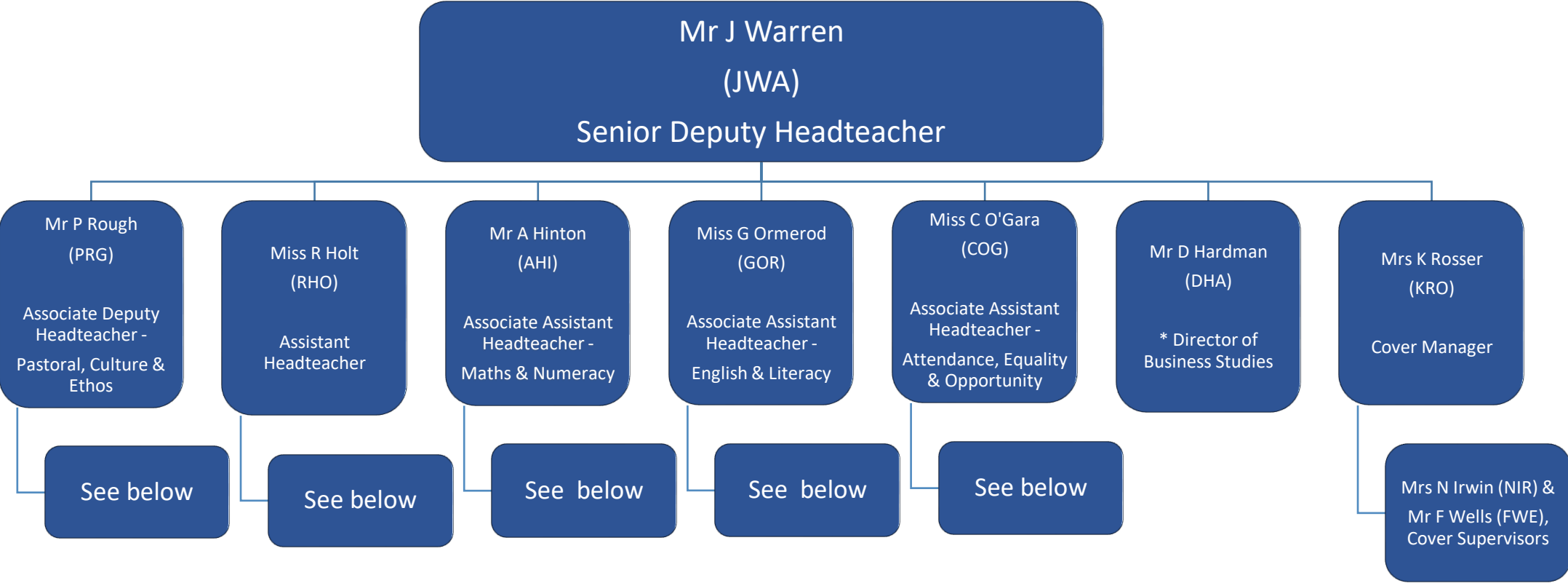
Line Management of:
DOS - PE/Sport
DOS - Music
DOS - Drama
DOS - Careers & Aspiration
*Liaison with SfYP
independent Careers Advisor

Line Management of:
Finance Officer
Finance Assistant
Catering Manager & Team

Line Management of:
Office staff
Reprographics Manager

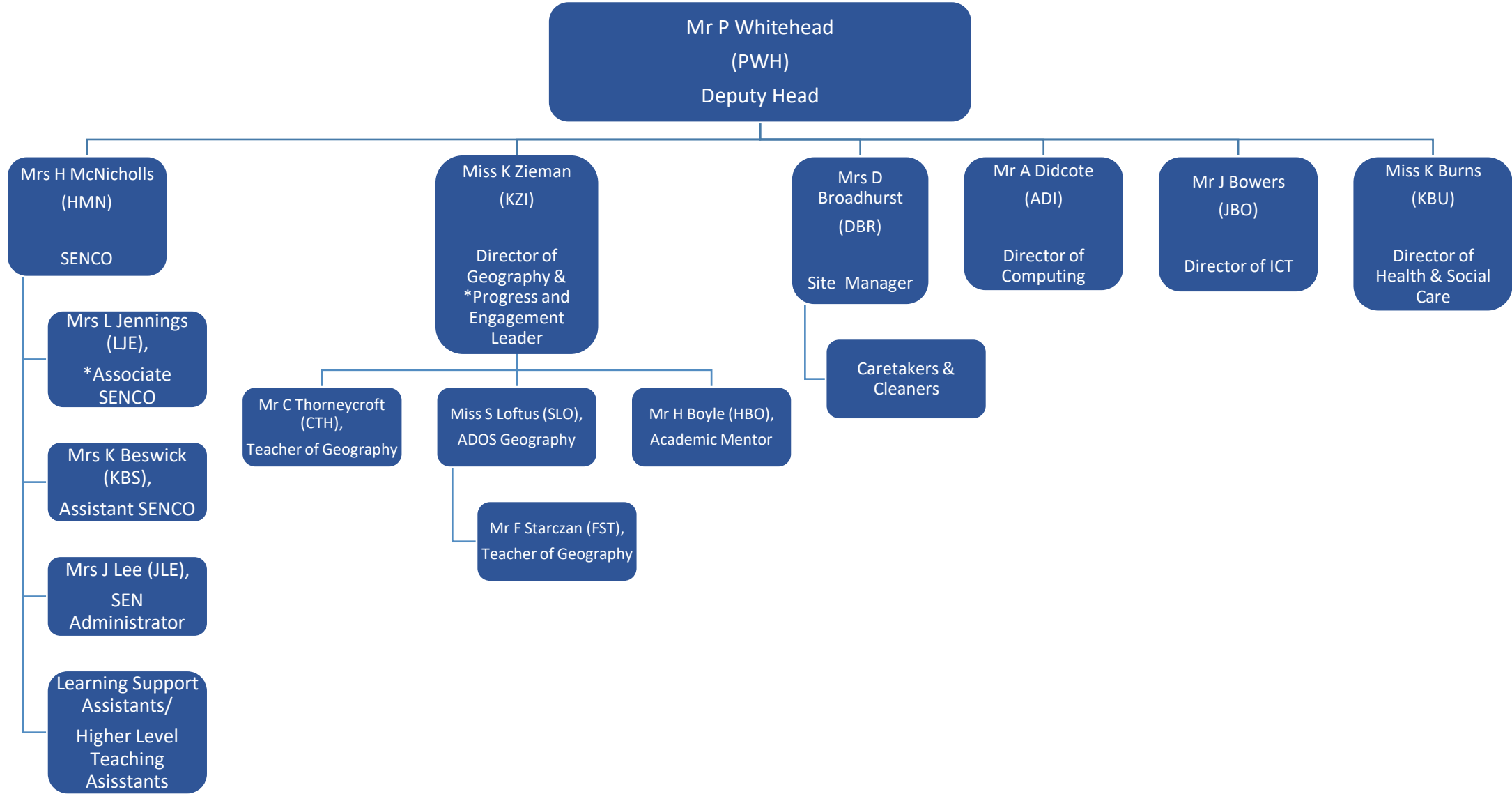
Line Management of:
ICT/AV Technician
ICT Technicians

SENIOR DEPUTY HEAD



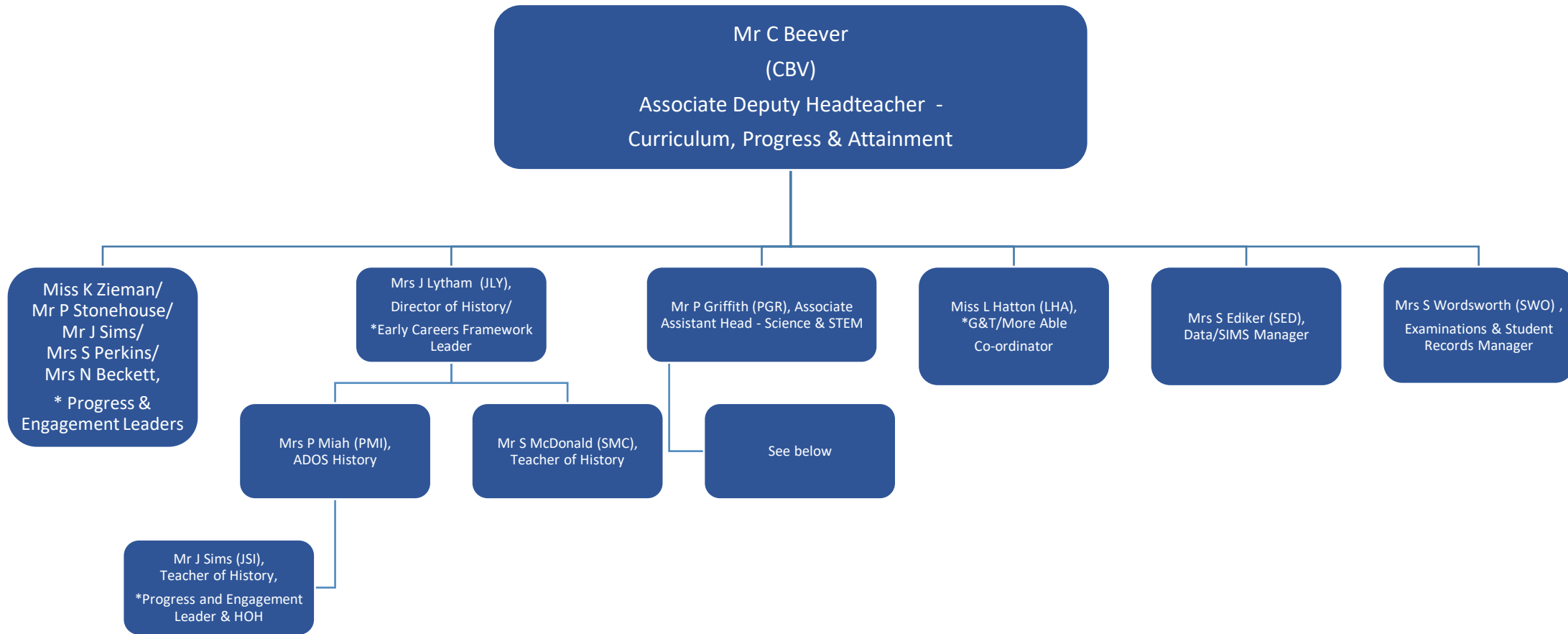
Key: * = Secondary line management within the department, in addition to the post holder's other primary management role / Mat = Maternity Leave / ECT = Early Career teacher (exempt from the Performance Management process)

DEPUTY HEAD

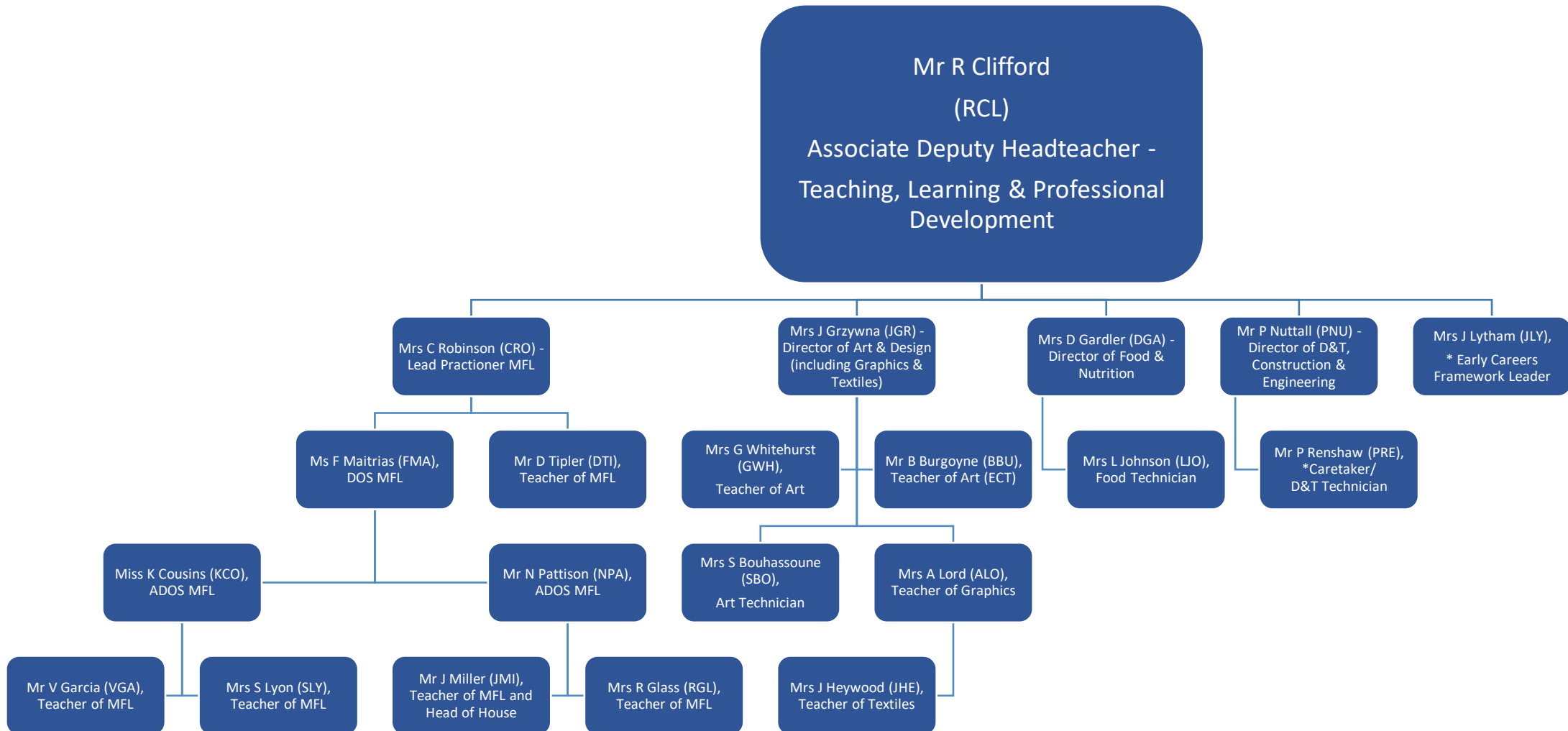


Key: * = Secondary line management within the department, in addition to the post holder's other primary management role / **Mat** = Maternity Leave / **ECT** = Early Career teacher (exempt from the Performance Management process)

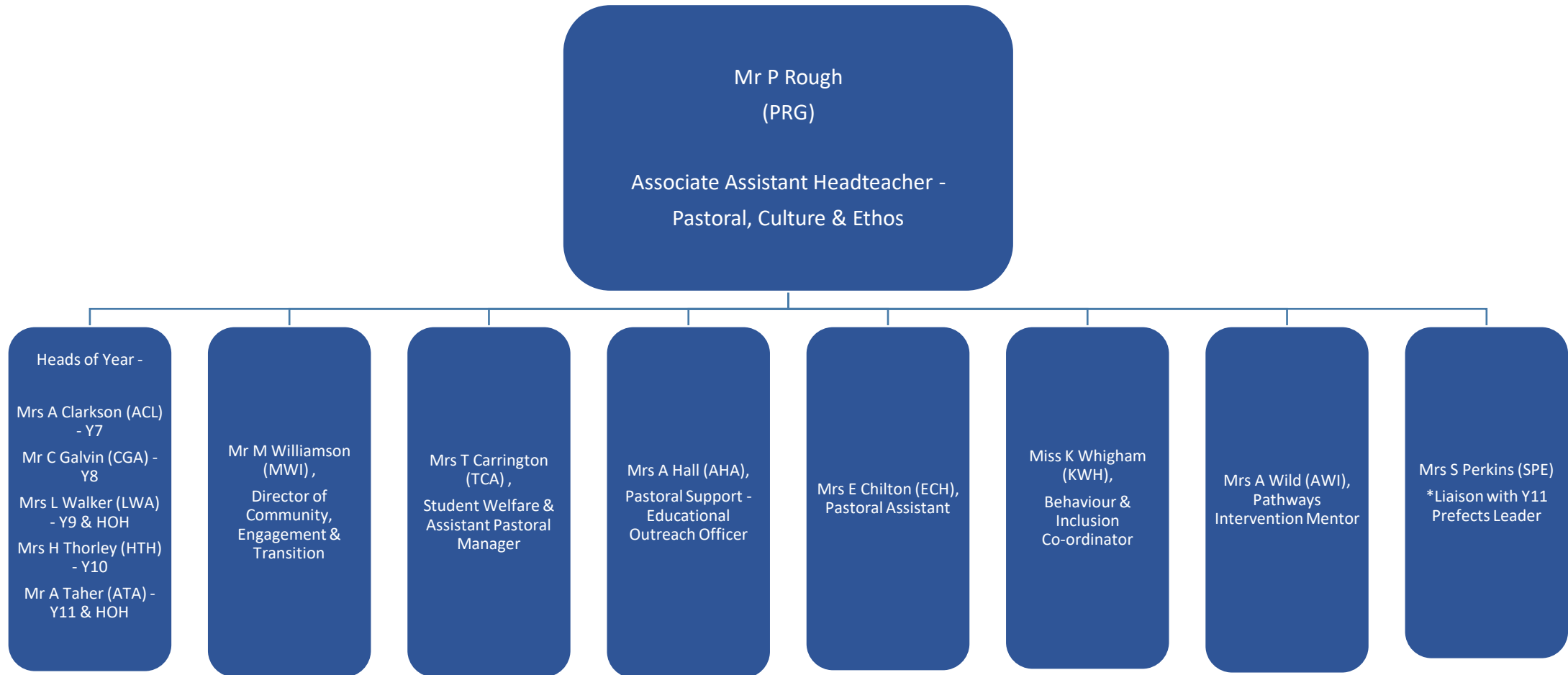
ASSOCIATE DEPUTY HEADTEACHER



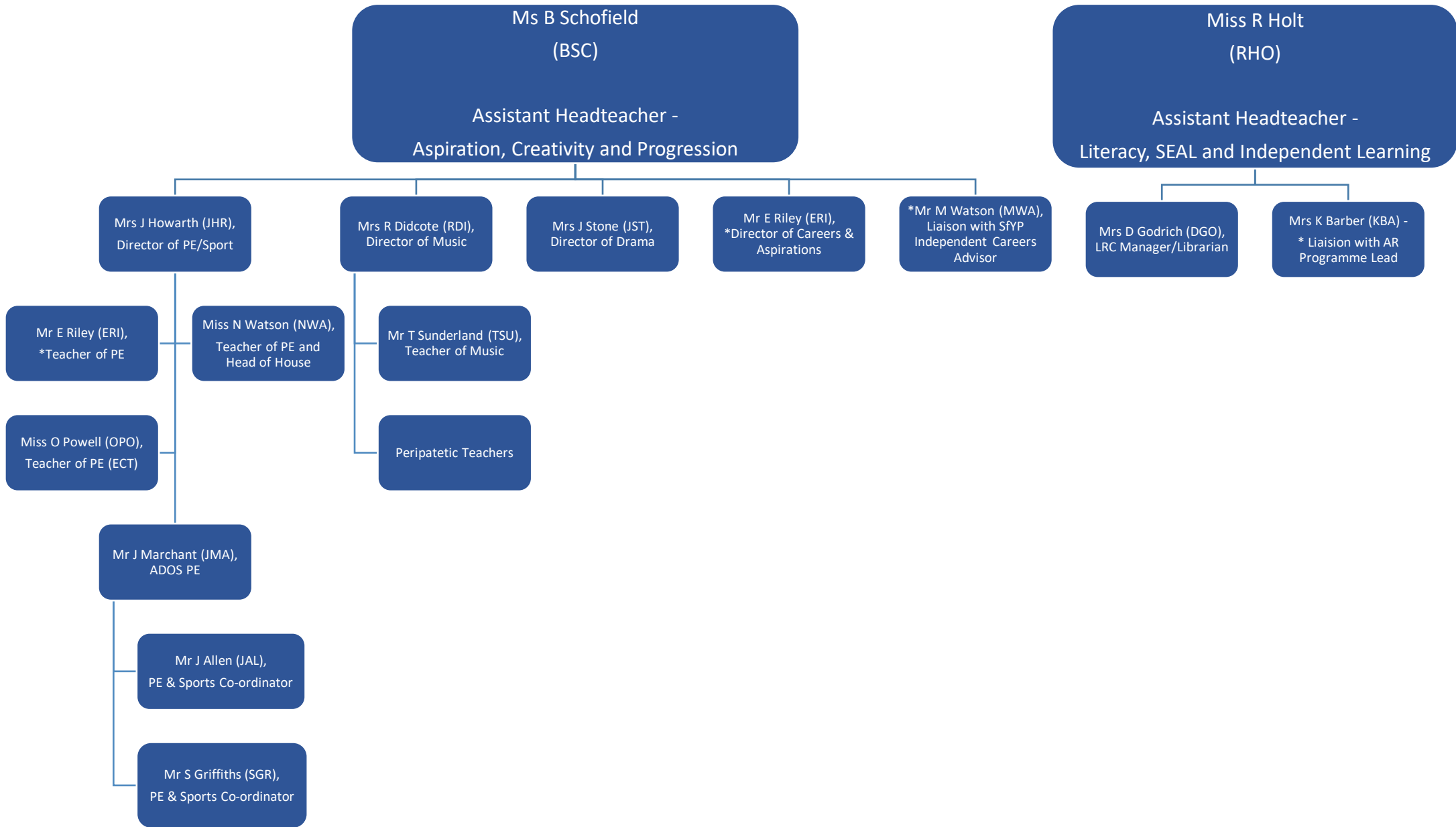
ASSOCIATE DEPUTY HEADTEACHER



ASSOCIATE DEPUTY HEADTEACHER

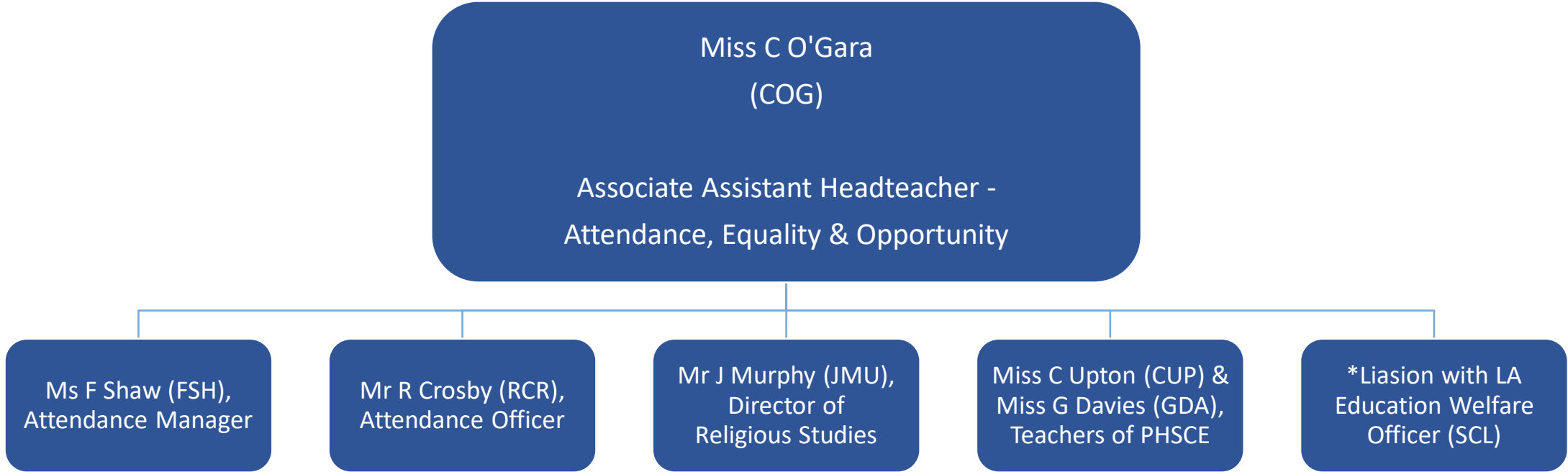


ASSISTANT HEADTEACHERS



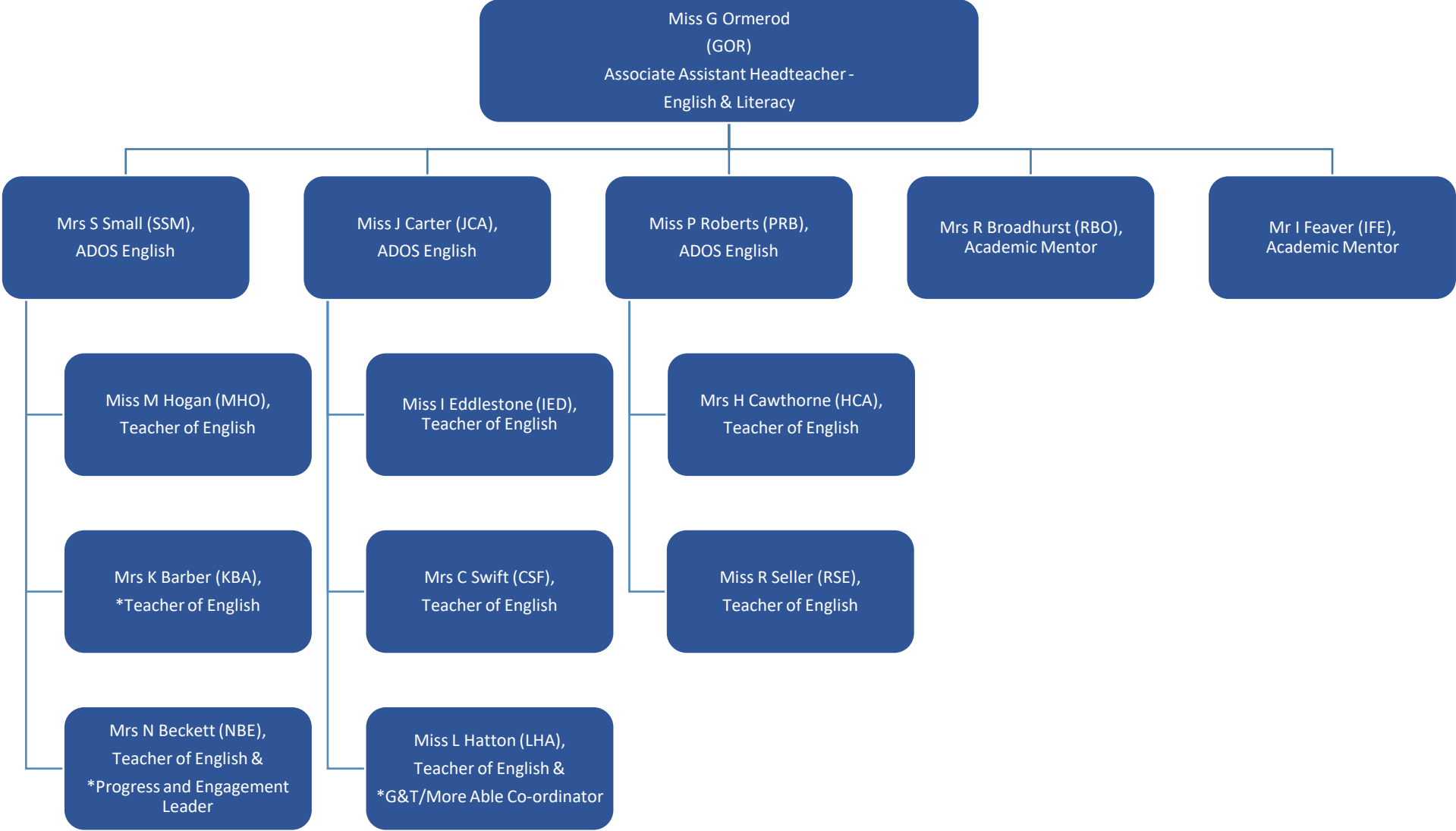
Key: * = Secondary line management within the department, in addition to the post holder's other primary management role / Mat = Maternity Leave / ECT = Early Career teacher (exempt from the Performance Management process)

ASSOCIATE ASSISTANT HEADTEACHER



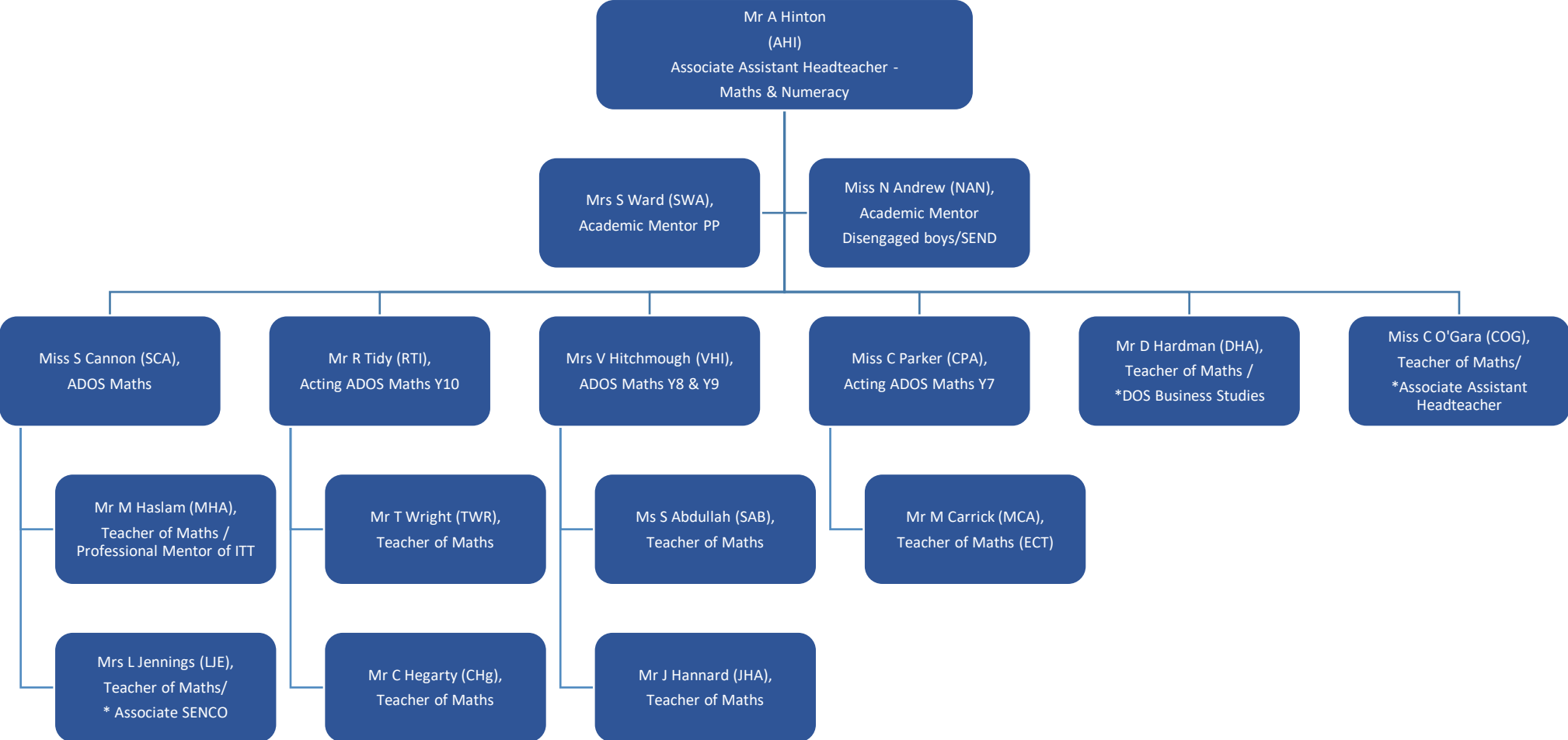
Key: * = Secondary line management within the department, in addition to the post holder's other primary management role / **Mat** = Maternity Leave / **ECT** = Early Career teacher (exempt from the Performance Management process)

ASSOCIATE ASSISTANT HEADTEACHER



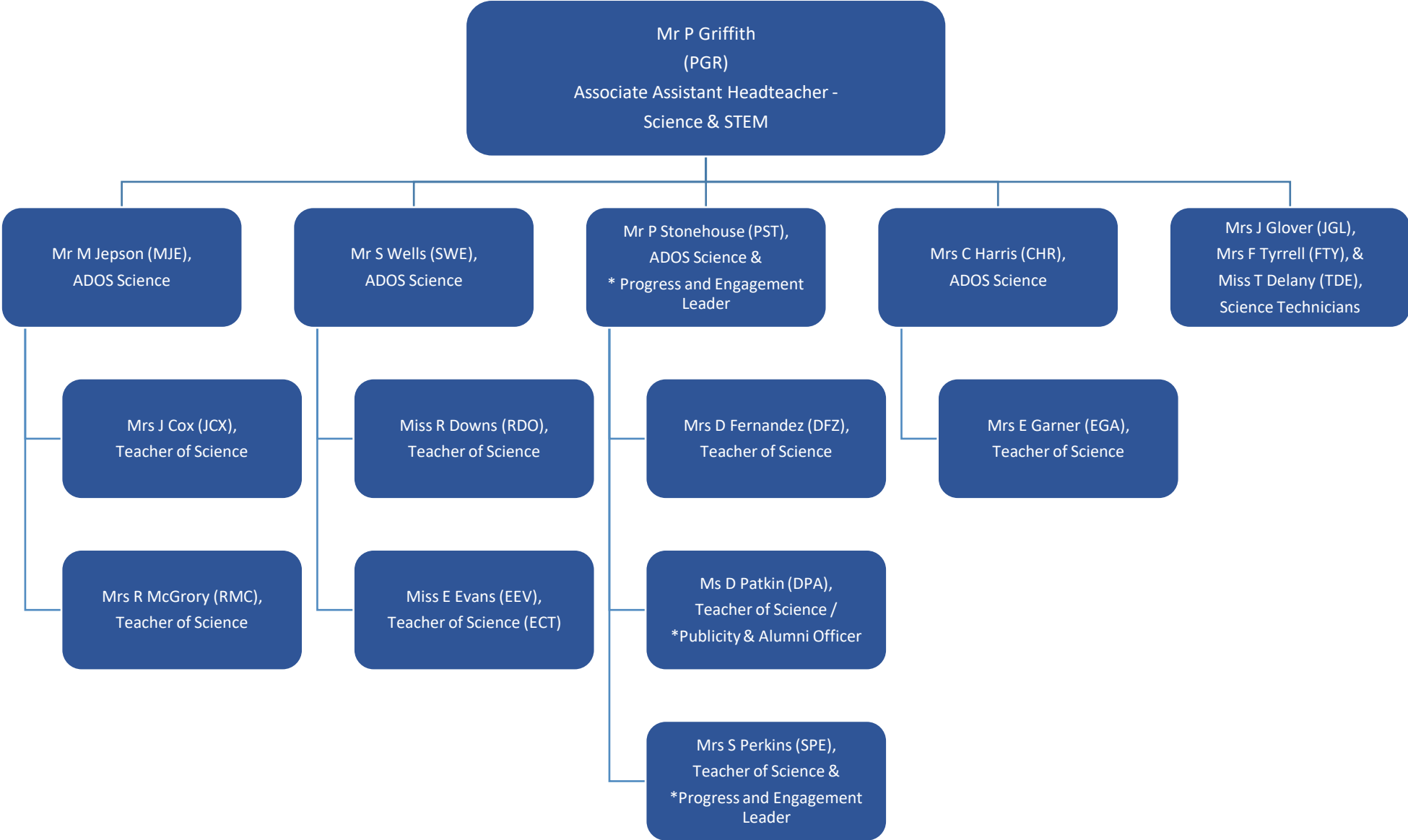
Key: * = Secondary line management within the department, in addition to the post holder's other primary management role / **Mat** = Maternity Leave / **ECT** = Early Career teacher (exempt from the Performance Management process)

ASSOCIATE ASSISTANT HEADTEACHER



Key: * = Secondary line management within the department, in addition to the post holder's other primary management role / **Mat** = Maternity Leave / **ECT** = Early Career teacher (exempt from the Performance Management process)

ASSOCIATE ASSISTANT HEADTEACHER



Key: * = Secondary line management within the department, in addition to the post holder's other primary management role / **Mat** = Maternity Leave / **ECT** = Early Career teacher (exempt from the Performance Management process)